



WILLIAM CAMPBELL  
FOUNDATION

Giving children hope and a future

# Annual Report

2014 - 2015




"I wish, I wish,  
I wish for you..."

# Contents

<b>Vision</b>	
Our Vision	2
Philosophy of Care	2
<b>Our Board</b>	
Management Role	4
Control of Finances	4
Board Member Quotes	5
<b>Message from Our CEO</b>	6
<b>Our Services</b>	
Out of Home Care	8
Southern Brokerage	8
- Emergency/Crisis Care	8
- Supervised Contact	8
- Supervised Transport	8
- Youth Work Support/Crisis Care	8
- Mentoring	8
William Campbell College 'Special Assistance' School	9
Chaplaincy	9
<b>WCF Departmental Reports</b>	
Operations Manager	10
Chief Financial Officer	11
Administrator	12
Southern Brokerage Manager	13
Principal Psychologist	14
Child Protection	15
Chaplain	16
Farm Manager	17
Carer Recruitment, Training & Support Program	18
<b>Future Growth</b>	
Moving Forward	20
<b>Fundraising</b>	22
<b>Organisational Structure</b>	23
<b>Sponsors</b>	24
<b>Summation</b>	25

# Vision

## Our Vision

To provide Christian care and accommodation for abused, neglected and homeless children and young people, to give them life opportunities with a strong focus on their educational needs. 

## Philosophy of Care

William Campbell Foundation's foundational belief is that every child has a fundamental birth right to be wanted, loved and nurtured and to be provided with a loving, stable family home environment. William Campbell Foundation will address these needs by offering out of home care that is superior in its expertise and execution.

Our highly qualified Staff, together with our professionally trained Foster Carers will continually monitor, with the child's active involvement, the progress of each child or young

person and will provide or assist in the implementation of appropriate individual educational and developmental programs.

We believe our model of care will have far reaching effects both for the child's personal growth and the community, which will reap the benefits of their educational and personal achievements.

Reunification with and restoration to the child's birth family will be encouraged and achieved wherever it is in the best interests of the child.

*"...It's an honour and a privilege to support Bill and all of you who work tirelessly to support our children ..."* Supporter

The Foundation is committed to maintaining life-long involvement with and offering support to, each young person leaving out of home care if they so choose, upon reaching maturity.



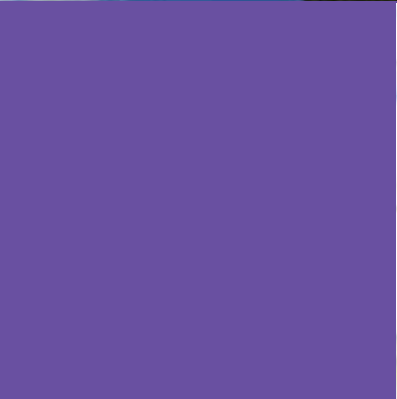
*Christmas Family Fun Day*



*Santa visits!*



*Face Painting!*

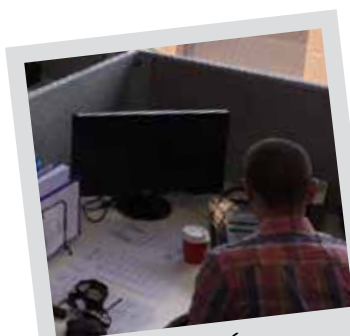


# Our Board

## Management Role

The management and control of the Foundation is entrusted to a Board of seven honorary Directors who are responsible for ensuring that the Constitution of the Agency is strictly adhered to, with its principles enunciated and performed in the spirit of our aims and objectives.

We are pleased to say that we have an active Board who are regularly consulted in all aspects of the organisation.



*New desks at Madulla*



*Horse at the Farm*

*"...please pass on our best wishes to your team with our gratitude to them for the work you all do for the kids of our community..."* Supporter

### The Board is responsible for:

- observing an on-going duty of care towards the operation of the Foundation;
- taking an active interest in the working mechanisms of the Foundation, its Staff, volunteers and supporters;
- supporting all activities in a professional manner which are staged by the Foundation;
- networking in the community to garner support;
- solvency;
- ensuring any debt that is incurred in the establishment of the Foundation is funded;
- procuring on-going funding of the Foundation by the relevant authorities;
- controlling requisite fundraising and negotiating appropriate sponsorship;
- executing due diligence in its legal, fiscal, moral and ethical responsibilities.

## Control of Finances

The Foundation has a fully computerised administrative office, not only for its accounting system, but also for its reporting system to Government bodies or authorities that may undertake on-going monitoring of the Foundation.

The office provides a place where fundraisers, committees and Directors can meet to update and refine the planning and development of the Foundation.

An independent external Auditor audits the accounts and prepares the

balance sheets each year for ready access by any authority that may have a direct interest in the Foundation.

Financial records are available on request to Head Office. All our Board member's profiles are on our website: [www.wcfoundation.org.au](http://www.wcfoundation.org.au)

# Board Member's Quotes



Bill Campbell - OAM, JP

*"As a former child in care, I am passionate about ensuring the safety, welfare and wellbeing of all children and young people in our care - giving them hope and a future. I am committed to great outcomes for the children and young people in our care. It's what drives me every day!"*



Dawn Campbell

"My commitment to children and young people in our care is very personal, having witnessed my husband's journey to wholeness with the knowledge that even at this level, we can make a difference!"



Donna Jones

"As a Board member of WCF since its inception, I know WCF consistently ensures children and young people are safe and secure with their physical, emotional and spiritual wellbeing always being of paramount importance..."



Barrie Mahaffy

*"...I share in our stated aim that the physical, mental and moral wellbeing of the children in our care has been and always will be, the guiding principle behind every action taken in the name of WCF."*



Tony Thomson

*"With WCF, I see our primary focus and responsibility is one of providing a safe, secure and nurturing environment where children can heal and grow. Where their current uncertainties are turned into a future with hope and a feeling of belonging and being valued for who they are."*



Sylvia Mahaffy

"...I believe that while child safety is a stated aim of a civilized society, with WCF it must always be a solid, unalterable policy enshrined in our operation guidelines which ensures that each and every action taken in the name of WCF meets this priority."



Kimberley Jones

"As a recent member of the Board of William Campbell Foundation, I have seen that all aspects of a child's health are the first priority of the Board and management - ensuring that they feel safe, secure and loved."



Paul McBeachie

*"I see one of the critical components to being a child safe organisation is the development and implementation of robust child safe policies and procedures. I believe this structure gives strong boundaries around good Agency practice for great outcomes."*

# Message from our CEO



This year we entered our 10th anniversary which I believe created a maturity in our mission and entrenched our commitment to provide a service of excellence to all children and young people entrusted into our care.

It has been a challenging year with the introduction of the "Safe Home For Life" reform developed by Family and Community Services along with other stakeholders. Parts of the program have been legislated with the other sections being implemented in 2016.

Our management has been working to develop the necessary policies and procedures to successfully implement the new programs.

We have had a full year of intensive training with Staff and Carers to maintain the high level of competencies we require to continue providing a high degree of care and nurture to children and young people.

It is a privilege to work with such wonderful people so dedicated in securing the most positive outcomes for each child and young person. We are blessed with a team who are magnificently led by our Operations Manager Sonia Liddicoat and ably supported by all our Managers and other Staff. I also commend our Administrator Suellen Emerton, who has served us for 11 years and previously as a volunteer for 5 years, culminating into 16 years of dedicated service.

To our Fosters Carers, it is with profound gratitude on behalf of the children and young people and indeed all of us, to thank you for the sacrifices you undertake in giving of yourself to enable children and young people to become the person they are created to be, with love, nurture and a safe home.

I especially want to acknowledge the birth children of our Carers who unselfishly give up space and privileges to accept foster children into their families. They are sometimes the unsung heroes who play an important role in the successful outcome of the child's inclusion into their family.

Our biggest disappointment was the closure of our "Special Assistance School", William Campbell College, due to Governments, both State and Federal refusing to provide "gap funding" which would make the School financially viable.

Although we received normal funding including the highest category funding, the system does not allow for extraordinary funding for intensive programs that we incorporated over a four year period to achieve the outstanding results our School attained.

Our School was conducted in temporary premises on the farming property at Nowra Hill and in fact we utilised one of our 6 bedroom cottages, which was generously donated by the Property Industry Foundation. Shoalhaven Council has approved a Development Application and plans, to build our purpose built "Special Assistance School". Our determination to build and acquire funding is paramount. I am so passionate and resolute in insisting all disadvantaged children and young people are assured of their inherent right to an education that ensures their competitiveness into their adult life.

To our many Donors and Supporters, on behalf of the Board and the Agency please accept our sincere appreciation for your ongoing support. Pensioners to corporate donors are the lifeline of the organisation for whom we will be forever indebted.

I look forward to the coming year with great expectations and deem it an enormous privilege to serve the children and young people who come into our care.

May I say I feel blessed to be involved with people that have such compassion and dedication, who ensure our work is done from the heart and is viewed as a vocation by them.



*Bill Campbell*  
OAM, JP

**Chief Executive Officer**  
**William Campbell**  
**Foundation**



... "I wish, I wish  
your dreams  
come true ..."



## Out of Home care (Foster Care)

Children and young people in foster care live with their Carers in the community in the Carer's home, or in cottages or houses provided by the Agency, either on our farming property or within the community.

Carers are afforded on-going 24/7 support through the out of home carer team's Casework Manager and Caseworkers as well as on-going training and support in a range of relevant areas. We provide psychological services, counselling services, mentoring, in-house Chaplaincy services and educational services.



*"...the students have been so fortunate to have had such amazing role models in their lives"*

Carer

## Southern Brokerage Services

This service accompanies our foster care program and offers a variety of programs including:

### Emergency/Crisis Care

Qualified and trained personnel are available at a moment's notice to provide emergency and crisis care when a referral comes to Southern Brokerage from Family & Community Services.

### Supervised Contact and Supervised Transport

Southern Brokerage provides trained and qualified Staff who facilitate contact between children in out of home care, their birth family and 'significant others'. This service ensures that children are able to continue in a relationship with their birth family in a safe and supported environment.

### Youth Work Support/Crisis Care

Southern Brokerage provides support for a child or young person if the situation arises where they require supervision and support for a period of time whilst an out of home care placement is located. Trained Staff support children in a holistic manner to ensure continuity and stability whilst waiting for a more long-term option.

### Mentoring

Many young people require the support of a Mentor to assist them develop life skills or to help them through difficult times. Southern Brokerage Mentors come with the clinical backing of WCF's Psychologists who assist in the development and monitoring of behaviour support plans.



Cottage 2

Boxing Kangaroos

# William Campbell College 'Special Assistance' School

In January 2010, William Campbell Foundation opened its 'Special Assistance' School, William Campbell College.

The school provided individual tuition for children from K-6. In June 2010, the NSW Board of Studies issued 5 years registration to operate the school.

In spite of the fact that we were able to collate excellent empirical evidence to support the continuance of the school, due to a severe lack of Government financial support (both State and Federal) we had to close the school on 19 September 2014.

However this closure has not deterred us from planning for the future for our own 'purpose built' school on our farming property and if anything, has made us more determined to see the construction of the school come to pass.

We envisage it to be 'state of the art' in its vision, construction and purpose and know that at the appointed time, it will become a reality.

## Chaplaincy

We are proud to say that our Foundation is one non-Government Agency that has a full time Chaplain who works with our children, young people, Carers and Staff of the Agency. Prior to our school closing, the Chaplain also worked 2 days a week with the children, giving them Christian Life lessons as well as music and organising other activities.

This appointment demonstrates WCF meets the statutory requirements that we honour all children and young people's spiritual and cultural diversity.

Our Chaplain, Rachael, also mentors some of the older girls in our care. The response has been extremely positive and we are thrilled to have her working in our Agency.



*Rachael*

*"...Thank you again for the wonderful Presentation Day. It is so satisfying to see the way the children have gone from strength to strength ... it was a real honour to be with you all..." Carer*



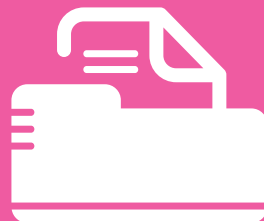
*Open day*



*Children's paintings*



*Activities*



## Operation Managers' Report

I am proud to report this year that WCF has increased our commitment and work to meet the demand of our various program areas in response to the growing need of vulnerable children, young people and their families requiring our services.

We are enormously proud that we received another 5 years Accreditation from the NSW Office of the Children's Guardian. This has been an amazing achievement for WCF as Kerryn Boland, the Children's Guardian, has recently indicated that her office is only looking for the highest standard of diligence, compliance and governance with Agencies.

*"...the Judge said openly in Court that he was very impressed with William Campbell Foundation"* **FACS**

Although I would prefer not to report that the number of children and young people in out of home care has grown, as an Agency, we have been able to provide a safe and nurturing home for 98 children and young

people. This number has increased from 86 at the same time last year. Whilst there are numerous referrals being received daily requesting placements, it is disappointing that we are not able to find placements for all of the children and young people as the challenge of recruiting Carers is ever present.



*New Desks at Albadulla*

WCF has an ongoing commitment to upskilling our Staff and Carers as we enter the new Safe Home for Life framework, which we continue to do through participation in a variety of internal and external training.

In light of the Safe Home for Life reforms which took effect in October 2014 and put the spotlight on permanency planning for children and young people, as an Agency we are looking at other services we are able to provide to support the permanent placement principles.

These include (in order):

- family preservation or restoration
- guardianship
- open adoption
- foster care

As a progressive Agency, WCF is committed to taking the necessary steps to support the legislative changes and will work collaboratively with Family and Community Services and other Non Government Organisations to implement the new Safe Home for Life reforms. For us, this will mean providing additional services to our existing programs, including Early Intervention / Family Preservation and Adoption. WCF embraces the concept of permanency planning for children and young people.

WCF are fortunate to have a very engaged and active Board of Directors and I would like to thank them for their commitment and service.

To the Staff, Carers and Carers with birth children who provide the direct face to face contact and care of our children and young people I would like to thank you for the support and dedication that you give.

Lastly, to the Management team who go above and beyond what is expected of them, your hard work and support to me is second to none and I appreciate you all greatly.



*Sonia Liddicoat*  
**Operations Manager**



# Chief Financial Officers' Report

For the Financial Year ended 30th June 2015 William Campbell Foundation has continued to maintain sound financial results with steady growth in our programs.

Financial reporting and accountability is maintained using an internal accounting package from which monthly financial reports are produced and tabled for approval by the Board of Directors on a monthly basis. Our financial statements are fully audited by external auditors at the end of each financial year.

A significant event occurred during the year which was the closure of our "Special Assistance" school, William Campbell College on 19 September 2014. The school, by its nature of intensive support for children who have suffered trauma as result of neglect and abuse, is an expensive facility to operate. The children all receive individual programs and intensive teacher support. The normal school funding provided by the Government leaves a gap funding shortfall. Despite many avenues being explored, 'gap funding' was not available. We see the closure of the school being a temporary situation and remain committed to specialist education services being of paramount importance to children and young people in out of home care. We will continue to advocate for this cause and are confident that the funding required will be secured in the future.

Out of home care funding has been supported by our financial management of revenue received from NSW Community Services, supporters and donors. Expenditure is monitored closely and costs contained, particularly in administration, whilst ensuring our service delivery is one of excellence. We have again received great community

support in donations from the public and businesses. We cannot adequately express our gratitude to all who support the children of William Campbell Foundation in many different ways.

*"...I wish you all the very best in the future and hope that our paths cross again at some stage ..."* **Supporter**

We are hopeful of our Annual Dinner returning in 2016. We anticipate we will have a staff member able to undertake this key fundraising event with the support of volunteers.

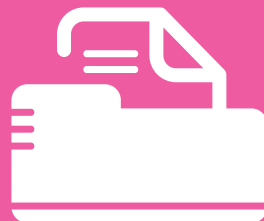
It continues to be a great honour to work alongside the most professional and committed people on this journey of William Campbell Foundation. The year ahead will provide many new and innovative services to achieve the very best lifelong results for children who have suffered too much in their young lives.



*Donna Jones*

**Chief Financial Officer**





## Administrators' Report

It's hard to believe another year has passed and we find ourselves at the end of the financial year for 2014, doing our Annual Report.

"... they were on holidays and had the children at a restaurant in the evening. They went to pay the bill and were told that it had already been paid by an unknown patron. This person had been watching the family with \*Amelia and thought they were wonderful with her, which they are ..." (\*Not her real name)

### Staff Member

In my 16 years as Administrator, I can truthfully say that this past year has been the most fruitful. It is wonderful to see firm evidence of achievement resulting from our amazing staff who work tirelessly toward ensuring stable placements for the children and young people in our care.

Head Office has continued to grow and I have been blessed to have the wonderful support of our Administrative Support Assistant, Kerrie Goodridge for another 12 months and in August 2014, we welcomed

our Payroll and Accounting Clerk, Jane Sinclair, to Head Office. Jane has taken a huge amount of work off my shoulders and our Chief Financial Officer's workload as well. Thank you Jane!

In August 2014, we were also thrilled to receive the good news that we had passed the NSW Office of the Children's Guardian re-Accreditation process for the next 5 years, enabling us to continue working to produce great outcomes of best practice for the children and young people that Family & Community Services has entrusted to our Agency.

I would like to take this opportunity to thank our CEO and Founder, Bill Campbell, for his 'never give up' attitude, to Donna Jones our CFO for her ability to understand the need for good fiscal policy, procedures and financial planning, our Board, who share the same vision around good financial policy and who are always looking ahead toward future growth, to Sonia Liddicoat our Operations Manager, for her wisdom, understanding, kindness and 'fairness' toward all staff and of course, our incredible staff who work sometimes in very difficult and challenging situations with the children and young people. Our Foster Carers remain the backbone of this Agency because without them, we could not do the work we do! Thank you WCF Foster Carers. I stand amazed!

I am sure 2015 will continue to see the fulfilment of our Vision in giving children and young people, hope and a future.



*Suellen Emerton*

Administrator





# Southern Brokerage Services' Report

Our Southern Brokerage Service continues to be a strong and sought after service. We currently employ a casual pool of 24 support workers. Due to recent changes in out of home care legislation, Family & Community Services have handed over a significant number of children and young people to us to case manage and we have had a significant increase in the amount of work we do for our internal Out of Home Care programs, while continuing to provide quality services and expertise to Family and Community Services.

*"...She commented that\* Jason has made some great positive changes and has told Donna that he really likes all of you and is enjoying having you work with him" (\*Not his real name)* FACS

The Southern Brokerage Service provides Supervised Contact and Transport for children and families and Mentoring services for children and young people. We also provide a Family Preservation Service to families who are at risk of having their children come into care. Our service will work with the family to identify strengths and areas of potential growth in an effort to reduce the probability of Family and Community Services needing further involvement.

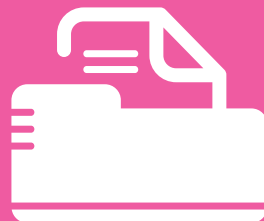
I am proud to say our team of support workers are highly skilled, compassionate and flexible when working with our families, children and young people and this program would not be what it is without their assistance. I have also been fortunate to have Ashlea Taylor continue to work with me in this program. Without Ashlea's efficiency, focus and support, this program would not run as smoothly as it does every day.

I would also like to take the opportunity to thank our Head Office team for all of their support as well as our Operations Manager, Sonia Liddicoat. Sonia's encouragement, wisdom and continued quest for the best outcomes for children in care make working with WCF that much easier for the entire WCF team.



*Alicia Morris*  
Manager  
Southern Brokerage  
Services





## Principal Psychologists' Report

WCF has had another a year of significant growth and development and as an Agency has continued to strive for the best service delivery to our children and young people, Foster Carers and Staff. It has been very satisfying for me to be a part of this growth and achievement.

WCF Psychological Services consists of Psychologist Alex Mitchell and myself with our service extending across all three offices in Dapto, Bomaderry and Ulladulla. Alex and I have worked on becoming active members of the Out of Home Care team by developing a strong, open and respectful working relationship with Caseworkers and Managers. This has allowed us to support the Agency's growth and development by working closely alongside the Out Of Home Care team.

*"...and thank you so much for your help over the weekend and at such short notice. You are a pleasure to work with ..."* FACS

We have had some great successes in the past 12 months, but I want to mention a few in particular;

- The Reparative Parenting Program; a 10 session workshop for Foster Carers that focuses on recovery through parenting and the healing power of the caregiver relationship. In the past year I have been able to facilitate 3 groups, and the feedback from all three groups has been phenomenally positive. Carers who have completed the course report feeling more confident, calm and skilled. Positive behavioural and emotional changes have been noticed in the children in their care.
- Following the Office of the Children's Guardian (OCG) audits and feedback last year Alex and I have worked together to improve our service provision to better meet the needs of the Out of Home Care team, the OCG requirements and the Carers and children who are our primary concern. An example of this is improvements to systems surrounding the completion of Behaviour Management Plans and a review of the Behaviour Management Plan template.
- This year I have provided Clinical Supervision to the Provisional Psychologist at South Coast Medical Service Aboriginal Corporation (SCMSAC), as a part of our MoU with SCMSAC. My work in providing supervision has resulted in a strengthened relationship between the psychological services in both Agencies, a relationship that will carry into the future and will provide benefits to WCF and SCMSAC.



*Emma Butler*

Principal Psychologist

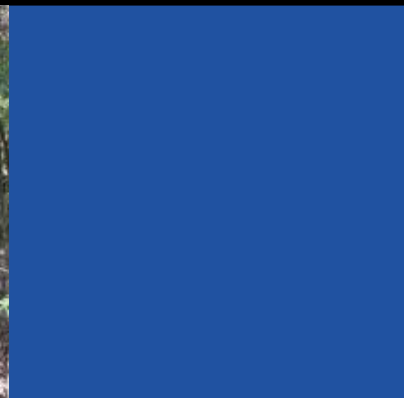
# Child Protection Report

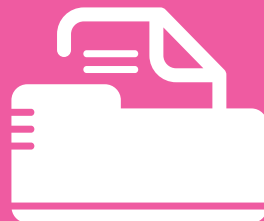
Child Protection matters within the Agency this past year saw a few investigations being carried out. All were resolved in a timely manner.

*"... I would like to thank you for the extensive support (you have given me) throughout my time at the Agency..."* **Supporter**

Additionally, the NSW Office of the Children's Guardian had been working for a number of years, on a Carer's Register which was finally released on 15 June 2015. The purpose of the CR is to ensure that all Foster Carers have extra in-depth probity checks with a satisfactory outcome, before they are issued with an "Authorisation Number", which gives them the authority to be authorised Foster Carers.

WCF strives to ensure the safety, welfare and wellbeing of all children and young people in our out of home care Agency is paramount.





## Chaplains' Report

The role of Chaplain at WCF is to assist the organisation meet responsibilities of spiritual development and religious rights of children and young people placed within WCF care. I am also available for Staff, Carers and their families who may want or need pastoral care and spiritual support. To fulfil these requirements in my role as WCF Chaplain, I endeavour to work in a multi faceted and diverse capacity throughout WCF. With the closure of William Campbell College, our 'Special Assistance' school in September 2014, we revisited the Chaplaincy role to develop new ways we could continue to support our children and young people.

*"...God bless you all, every one, for the care and love you are giving to our kids and their needs. I am but one, but I think it's awesome ..."* Supporter

The Chaplaincy role now facilitates camps for children and young people within our Agency that focus on spiritual development and building self-esteem. We have had two camps in the last six months with the goal of four camps a year (one every school holidays.) WCF Staff run these camps along with other ministries and services that can support our kids in the development of their spiritual growth, self-esteem and building positive relationships. These camps have been very well received and supported by kids and Carers. I want to thank Sharni and Rick Smith of Restor'd, "Worthy Goods for a Worthy Cause" for their financial assistance in enabling us to run these camps.

I have also started afternoon "Kids Clubs" for our primary aged children in Bomaderry and Ulladulla. "Kids Club" continues to grow with up to 14 kids in attendance and is a great opportunity to teach Christian Living lessons in a fun and practical way. The kids enjoy getting to know each other and spending time with other members of Staff who provide wonderful support to the program and children.

Mentoring our young people and giving music lessons continues to keep me busy most afternoons as I strive to support the musical talents of our young people and support the development of their life skills. This aspect of my role is really diverse covering anything from teaching Scripture, music lessons, assist in writing resumes, driving lessons and job hunting. The whole idea is to support the young person in areas they would like to develop.

The Chaplaincy role continues to advance and support the growth of WCF. I attend Shared Stories, Shared Lives training and Carer training to connect with Carers and promote the Chaplaincy role. I also attend regular training and professional development that will assist in the correlating of Chaplaincy and out of home care. It continues to be an honour and privilege to be a part of WCF and to see the Chaplaincy role continue to thrive in the Agency.



*Rachael Riddington*

**Chaplain**



# Farm Managers' Report

The past 12 months has proved to be a huge journey for me in my role at WCF. I have been able to create more landscaping around the farm and the shrubs and trees that were planted last year, are now very well established.

Bird life on our farm is prolific. Our Serenity Lake sees many different types of birds flock to drink and live and of course, our lake is 'staffed' with the obligatory family of ducks taking up residence.

*"...if there is anything we can do to support your work besides the small donation I have made today, please feel free to reply and we will do what we can..."* **Supporter**

My other duties have involved the upkeep of the 2 family cottages on the farm, care of the horse, slashing, landscaping, creating fire breaks, maintenance of our 3 out of home care offices at Dapto, Bomaderry and Ulladulla, Holborow House at West Nowra and any 'odds and ends' that may need attention at Head Office. Occasionally I am asked to assist in transporting the children or young people's furniture to a placement.

Prior to our 'Special Assistance' School's closure, I had also been involved in providing some children with mentoring activities around the farm, if there were issues that arose with their behaviour. This enabled the Teachers to concentrate on the other children, whilst giving them all some well needed respite.

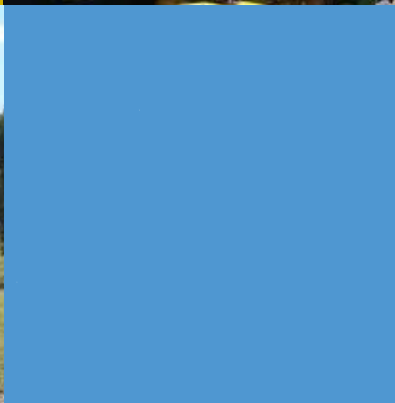
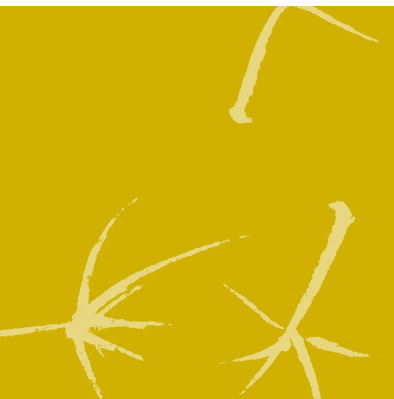
I love the diversity of my role which is never dull and always changing!

I am thrilled to say that I work with an amazing team of dedicated people, whose main aim is to ensure that all children and young people in our Agency's care, be given opportunities to learn and grow, and become settled and established in their individual placements.



*Craig Rogers*

**Farm Manager**



## Carer Recruitment, Training and Support Programs Report

Throughout 2014 – 2015 our Carer Recruitment, Training and Support Program continues to go from strength to strength. Our inaugural Manager of the Program was Ngaere Rayner who has stepped down due to other competing opportunities. Ngaere has done a great job in the first instance and handed the baton to me during the last 4 months.

We continue to advertise and recruit Carers to support our children and young people in out of home care and as always, our focus is to ensure that our Carers are trained and supported in their role with the Agency. Foster Carers are pivotal in ensuring that great outcomes are met and children and young people reach their full potential.

*“...Enclosed is our cheque towards your work with children who need a stable and caring environment...”* Supporter

We have been fortunate to be able to provide several training sessions to our Carers throughout this year, including:

- Birth Family Contact
- Allegations and Suitability
- Anxiety

In addition, we continue to provide the mandatory Shared Stories: Shared Lives training package to our new Carers as part of their assessment requirements, and have delivered this training in conjunction with the South Coast Aboriginal Medical Service, with their Caseworker Aaron Stephens, offering significant cultural insight to all the Carers being trained. Our Foster Carers also enjoyed the Connecting Carers quality training opportunities that are regularly offered by their organization.

Our annual Foster Carer Luncheon proved to be a great success with WCF management having the opportunity to thank each of our hard working Foster Carers with a gift of a mug with artwork designed by all the children.

On 11 June 2015 the NSW Carer's Register was released which will capture information on all authorised Foster Carers throughout the State. The CR is a wonderful tool to ensure all accredited foster care Agencies work together to provide well trained and properly authorised Foster Carers.

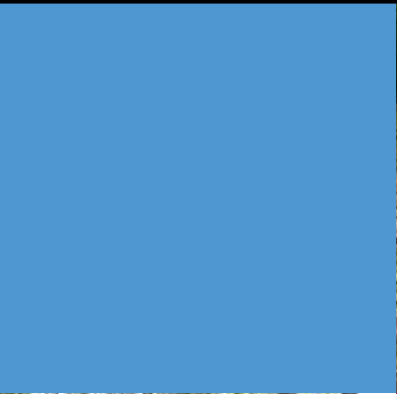
I would like to say a huge thank you to our hard working team - Ngaere Rayner, Belinda Charlton and Amanda Kelly. Without the extra effort these ladies put into their work, the program would not be the effective and robust program it is today.

I look forward to the 2015 – 2016 year, where we are expecting significant growth in our Carer pool, with the aim to continue supporting children and young people to experience stability, growth and nurture from our wonderful Foster Carers.



*Alicia Morris*

A/Manager, CRTS





## Moving Forward

WCF continues to forge ahead in spite of the many challenges facing the social welfare sector including sourcing Foster Carers and their families, who are willing to open their hearts and homes to provide secure placements for children and young people at risk. This is an issue that all Agencies constantly face.

*"...I thought I would mention they are very happy with the way the Agency has handled the situation... they are really impressed.."*


Carer

We have many plans for our future growth and continue to push ahead with these plans, including different funding opportunities to deliver quality care and accommodation to all children and young people who find themselves in an environment of abuse.

All WCF departments and staff work tirelessly toward fulfilling our Vision.

We are confident that our strategic planning is on track and our future is secure as we forge ahead with our plans for the Agency's continued success.





"I wish, I wish,  
I wish for you...  
I wish, I wish your  
dreams come true  
... Giving children  
hope and a future"

# Fundraising \$

Overall our fundraising for 2014-2015 has been a challenge as we have not been able to spend the time organizing a fundraising event, due to other competing situations.

In spite of this difficulty, we have been overwhelmed by the various community groups who have asked for our Founder and CEO, Bill Campbell, to speak at their meetings. These talks have often generated donations which have been very much appreciated.

*"...I just wanted you to know that I am thinking of you all, especially this week as WCC closes its doors (at least for the present). I also wanted to say how fantastic, dedicated, loyal, competent and capable you all are..."* **Supporter**

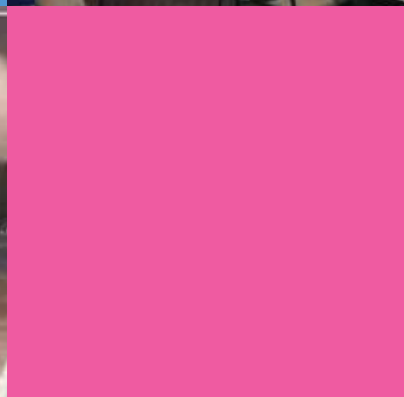
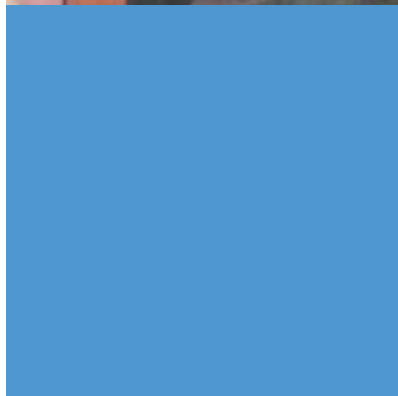
Additionally, other unsourced donations have also been forthcoming which has been a blessing to our Agency. These have come from service clubs, individuals and organisations. Currently our donations have been going to two different areas.

Our Chaplaincy department under the care of our Chaplain, Rachael Riddington, who has been able to source great care packages for our children and young people with the money that has been donated to her department. These care packages are issued when the children come into care.

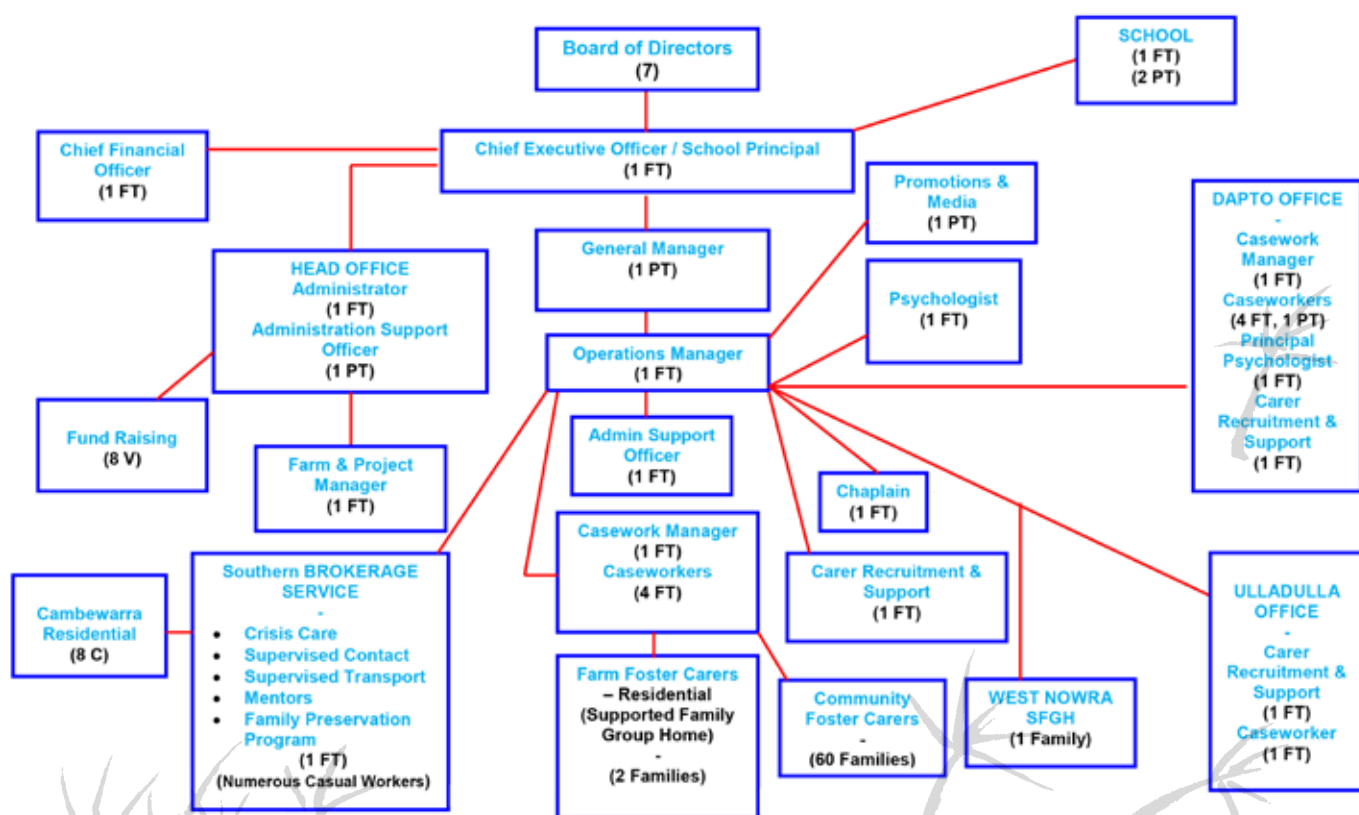
We have also continued to contribute money to our building fund to construct a special 'purpose built' new school on our farming property at Nowra Hill.

Our existing fundraising team have indicated their on-going support when we decide to push ahead with our Annual Dinner.

We remain profoundly grateful to our Sponsors and donors for their support over many years.



# Organisational Structure



# Our Sponsors



## Major Sponsors



## Sponsors



# Summation

William Campbell Foundation count it a privilege to serve children and young people at risk. We have a proven track record of providing quality care and accommodation to children and young people.

We are proud to offer professional and well qualified Staff to support children, young people and Carers, in achieving William Campbell Foundation's vision, ethos and purpose.

For more information please contact:

**William Campbell Foundation**

*Head Office*

138 Charles Avenue

Minnamurra

NSW 2533

1300 130 585

Ph/Fax: (02) 4237-5566

**All correspondence to:**

William Campbell Foundation

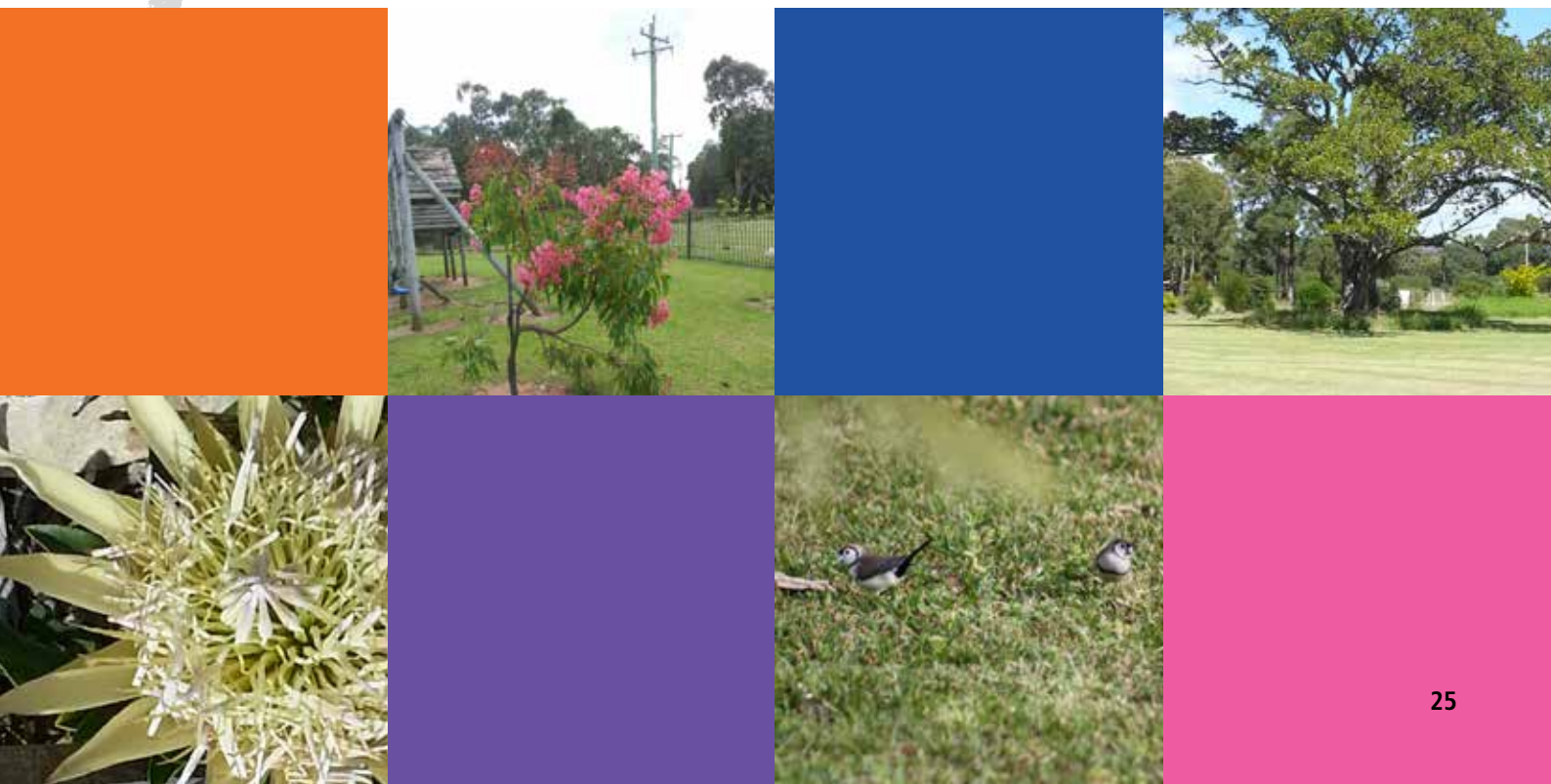
PO Box 3035

Minnamurra

NSW 2533

Email: [headoffice@wcfoundation.org.au](mailto:headoffice@wcfoundation.org.au)

Website: [www.wcfoundation.org.au](http://www.wcfoundation.org.au)





Make all  
their wishes  
come true!



WILLIAM CAMPBELL  
FOUNDATION

Giving children hope and a future